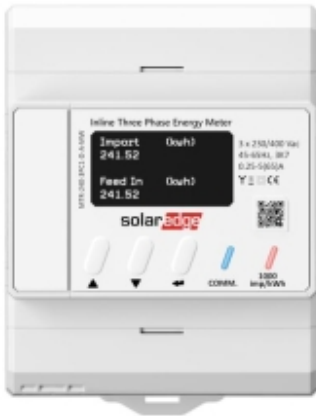


## SolarEdge MTR-240-3PC1-D-A-MW direct meter MTR EU3 three-phase

Product code: **AF.licznik.solaredge.03**



SolarEdge MTR-240-3PC1-D-A-MW is an advanced direct meter, ideal for installation in standard electrical panels. It ensures precise energy measurement with an accuracy of up to 1% and comes with built-in current transformers, facilitating quick installation and reducing labor costs. With integration with SolarEdge Energy Net, it enables wireless communication with the inverter and management of energy export/import limits. It can be directly connected to 65 A per phase, both in single-phase and three-phase connections. Configuration is simple thanks to automatic detection by the SolarEdge inverter, and monitoring is done through the SetApp mobile application. It is a comprehensive measurement solution that allows increasing revenue through energy usage optimization.

### Product variants

Index	Price
<b>SolarEdge MTR-240-3PC1-D-A-MW direct meter MTR EU3 three-phase</b> AF.licznik.solaredge.03	Product prices only visible after login. If you do not have an account, please register.

### Product description

SolarEdge MTR-240-3PC1-D-A-MW is an advanced direct meter, ideal for installation in standard electrical panels. It ensures precise energy measurement with an accuracy of up to 1% and comes with built-in current transformers, facilitating quick installation and reducing labor costs. With integration with SolarEdge Energy Net, it enables wireless communication with the inverter and management of energy export/import limits. It can be directly connected to 65 A per phase, both in single-phase and three-phase connections. Configuration is simple thanks to automatic detection

by the SolarEdge inverter, and monitoring is done through the SetApp mobile application. It is a comprehensive measurement solution that allows increasing revenue through energy usage optimization. Technical specifications of the SolarEdge Home direct meter: Nominal voltage: 3 x 230/400 Vac Phase to phase: 320 - 460 Vac Phase to neutral: 184 - 264.5 Vac AC frequency: 45 - 65 Hz Maximum current (I<sub>max</sub>): 65 A Transient current (I<sub>tr</sub>): 0.5 A Starting current (I<sub>st</sub>): 20 mA Minimum current (I<sub>min</sub>): 0.25 A Reference current (I<sub>ref</sub>): 5 A RS485 terminal block section: 0.2 - 2 mm<sup>2</sup> RS485 connector: Half-duplex communication, 3 wires (A, B, GND) MODBUS RTU protocol Power register update resolution: <200 ms All other registers: < 4 s RS485 line termination: 120 Ω (selectable) 8-digit display IP51 protection degree (internal) DIN rail mounting bracket Weight: 320 g Material: Polycarbonate Lexan 503R Dimensions (width x height x depth): 72 x 90 x 58 mm