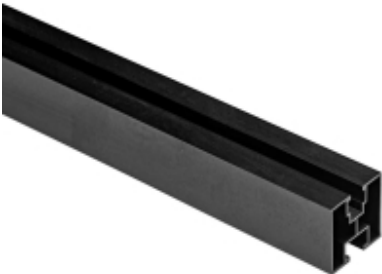


The black aluminum profile 40x40 with a hexagonal screw, L=2200mm, 0.81kg/m.

Product code: K.40x40.2



The aluminum profile 40x40 with a hexagonal screw, with dimensions L: 2200mm, is made of aluminum. Its main purpose is to enable the installation of photovoltaic panels using middle and end clamps.

Product variants

Index	Price
<p>The black aluminum profile 40x40 with a hexagonal screw, L=2200mm, 0.81kg/m.</p> <p>K.40x40.2</p>	<p>Product prices only visible after login. If you do not have an account, please register.</p>

Product description

The aluminum profile 40x40 with a hexagonal screw, with dimensions L: 2200mm, is made of aluminum. Its main purpose is to enable the installation of photovoltaic panels using middle and end clamps. This profile features mounting elements: Upper channel installation: It consists of a sliding groove with a M8 ball, allowing flexible panel mounting. It is fastened using a square M8 nut. Lower channel installation: It utilizes a M10 hex head screw, ensuring solid and secure mounting. Thanks to these mounting elements and a specially designed structure, this profile is highly functional and enables stable mounting of photovoltaic panels in various conditions and configurations. Cross-section: 40x40 mm Length: 2200 mm (± 5 mm) Material: Aluminum grade EN-AW-6063 according to PN-EN 573-3:2019 standard, T6 alloy according to PN-EN 755-2:2016 standard.